

# The General Brock December Newsletter

December has arrived!

## Important Dates

December 2 Loonie License Day teachers to share for each classroom

December 6, 13 ,20 - Pizza Day from 'Pizza Plus' - all Halal - \$3/slice or two pieces for \$5

Tuesdays / Thursdays - Lego club in our Library during first nutrition break for grades 1-3 in our Library

December 8 Miracle in Sandwich Towne Tree Decorating

December 22 - Student of the Month - Staff to choose Character Trait / Month in Review Assembly

December 23 January 9 Winter Break

## School Safety

We take pride in ensuring that our students are safe at General Brock! As part of our Safe Welcome we ask for your help each day so that we can always keep our students safe

If your child is absent please ensure that you call the school before 8:30 am If your child needs to leave the school before the end of the day please ensure that you send a note to your child s teacher or phone the school office we will greet you at the front doors with your child ren The number one way you can help decrease the amount of traffic issues is to consider having your child walk to school or take the bus

With your help we know that we can create an even safer environment for our students!

## Bell Times

Start time is 8:35 a.m.

Breakfast program begins at 8:15

Student arrival 8:20 8:35 a.m.

8:45 a.m First Nutrition Break

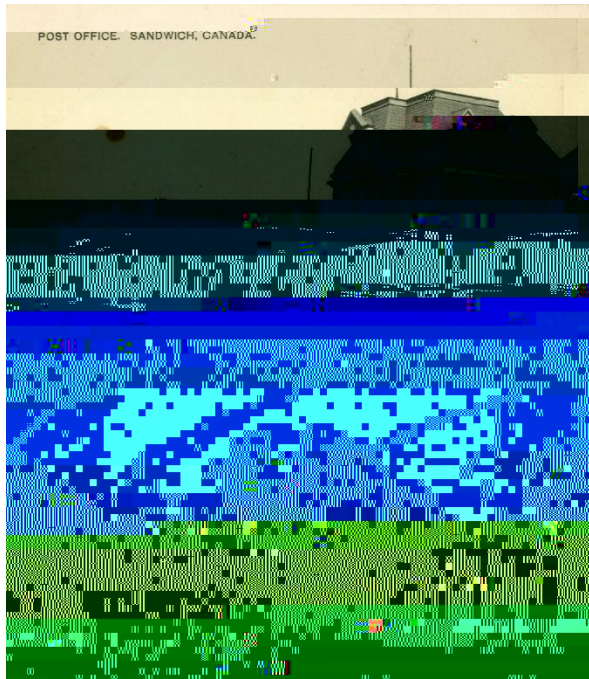
12:15 p.m Second Nutrition Break

End of day dismissal is 2:55 p.m.

## History Corner Sandwich Post Office

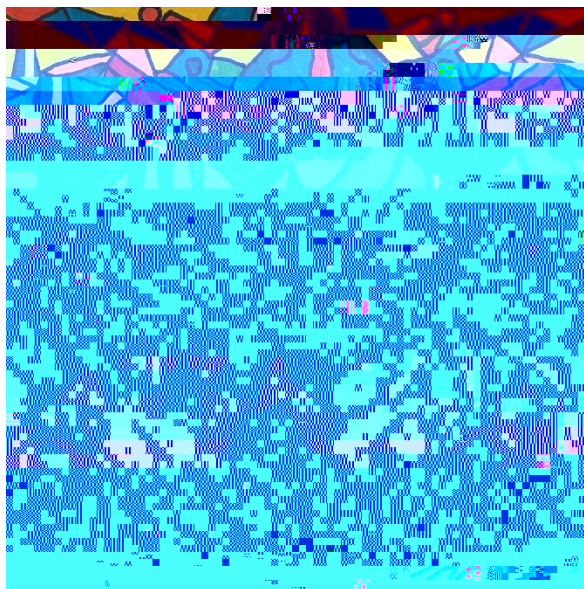
In the 19<sup>th</sup> Century, post office buildings were powerful symbols of the Dominion Government and played a vital role in the community and operations of a district town. The Sandwich post office operated first from William Hands s home through a sentry box and later at John Spiers general store Designed by David Ewart (chief architect of the Federal Department of Public Works), this 1905 building plan was executed many times across Canada. Aside from the first-floor post office, the second floor served as offices for Inland Revenue and Customs while the third was the Postmaster s home The bricks on the building reportedly came from Jules Robinet s brickyard and the Victorian fountain in a

replica of one donated in 1909 by former resident William Leech. The post office was closed in 2013 and was remodeled as a café in 2016.

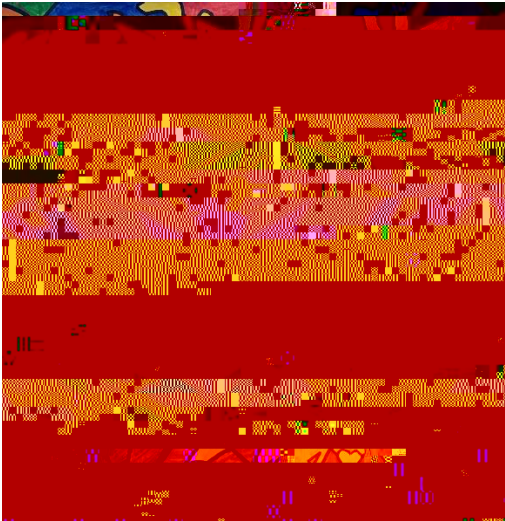


Class of the Month Mr Paterson s Grade Class check out this art work!

Mohamed



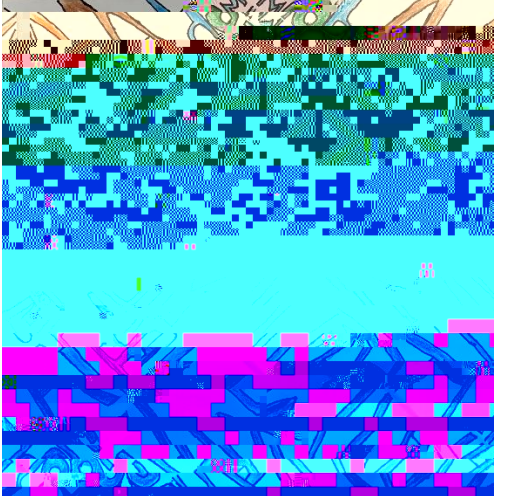
Savannah



Amirra



Eddie



Kaylynn